

## Modular Contactors

### Features

- Suitable for applications in general control, heating & lighting
- Frequently applied for switching of lamp loads, fans or pumps in utility and industrial areas
- Optimal contacts and control voltage
- Low heat dissipation to guarantee contactor endurance
- Available in 20, 25, 40 and 63 A Ratings
- DIN modular profile
- Standards: IEC61095, IEC60947-4-1

### Product Images



### Product Details

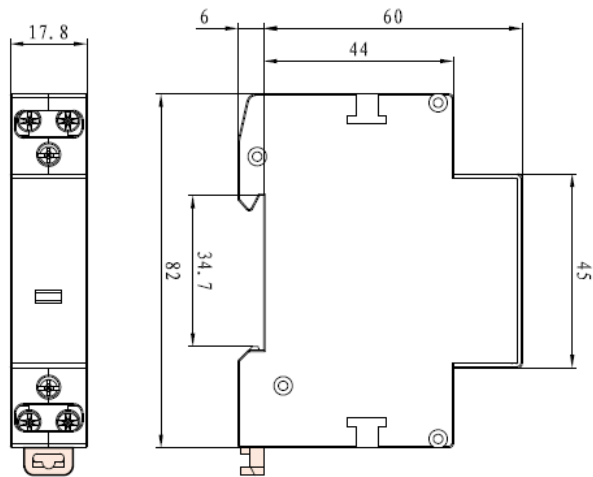
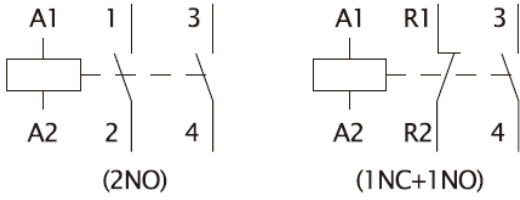
Part No.	Rating (A)	Coil Voltage (VAC)	Contact	No. Modules	Width (mm)
MC1P-20-230-20	20	230	2 x N/O	1	18
MC1P-20-230-11	20	230	1 x N/O + 1 x N/C	1	18
MC2P-25-230-40	25	230	4 x N/O	2	36
MC2P-25-230-04	25	230	4 x N/C	2	36
MC2P-25-230-22	25	230	2 x N/O + 2 x N/C	2	36
MC3P-40-230-40	40	230	4 x N/O	3	54
MC3P-63-230-40	63	230	4 x N/O	3	54
MC3P-40-230-04	40	230	4 x N/C	3	54
MC3P-63-230-04	63	230	4 x N/C	3	54
MC3P-40-230-22	40	230	2 x N/O + 2 x N/C	3	54
MC3P-63-230-22	63	230	2 x N/O + 2 x N/C	3	54

## Technical Specifications

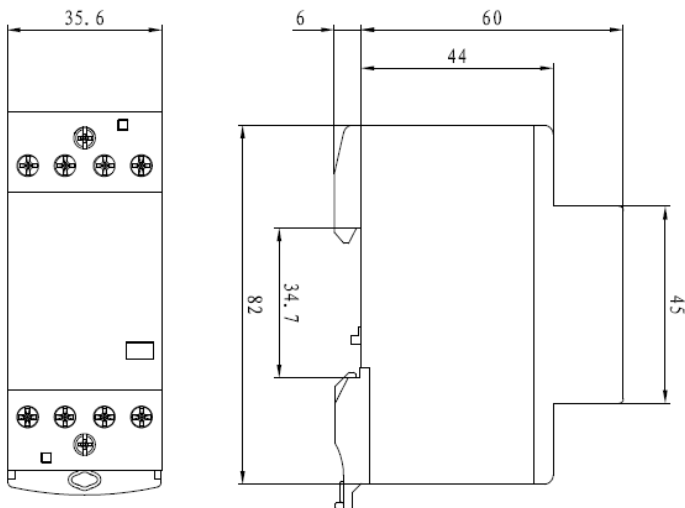
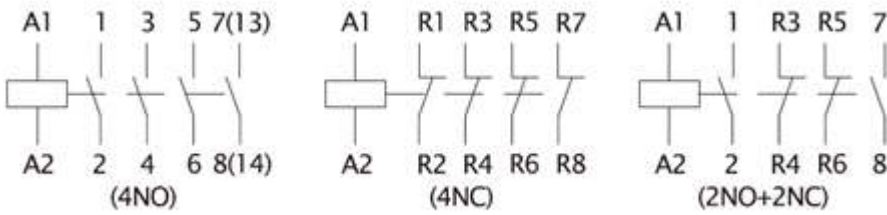
General		20A	25A	40A & 63A
Standards		IEC60947-4-1, IEC61095		
Nominal operating voltage 1-Phase	Ue 1-ph.	230V	230V	230V
Nominal operating voltage 3-Phase	Ue 3-ph.	—	400V	400V
Mechanical endurance (switching cycles)		3,000,000	3,000,000	3,000,000
Protection class		IP20	IP20	IP20
Permissible ambient temperature		-5°C...+55°C	-5°C...+55°C	-5°C...+55°C
Consumption (230V AC)		≤1.1W	≤1.35W	≤1.55W
<b>Contact rating</b>				
Rated insulation voltage	Ui	500V	500V	500V
Frequency		50/60Hz	50/60Hz	50/60Hz
Rated impulse withstand voltage	Uimp	4kV	4kV	4kV
Rated thermal current	Ith	20A(25A)	25A	63A
AC1 / AC7a Rated operational current	Ie	20A(25A)	25A	63A
AC1 / AC7a Rated operational current AT Ue =230Vac	Pmax	4.5kW(5kW)	5kW	11.6kW
AC1 / AC7a Rated operational current AT Ue =400Vac	Pmax	—	16kW	40kW
AC3 / AC7b Rated operational current AT Ue =230Vac	Pmax	1.2kW	1.5kW	3.3kW
AC3 / AC7b Rated operational current AT Ue =400Vac	Pmax	—	4kW	15kW
<b>Electrical endurance</b>				
Maximum operating cycles at AC1/AC7a application		250000	250000	250000
Maximum operating cycles at AC3/AC7b application		250000	250000	250000
Maximum back-up fuse		25A gL	25A gL	63A gL
Coil inrush power(for all voltage ratings)		10~40mS	10~40mS	10~40mS
Coil consumption (for all voltage ratings)		10-25ms	10-25ms	10-25ms
Opening delay		<20mS	<20mS	<45mS
<b>Terminals for main &amp; auxiliary contacts</b>				
Terminal capacity-fine stranded wire		1-6mm <sup>2</sup>	1-6mm <sup>2</sup>	1-16mm <sup>2</sup>
Terminal capacity-solid wire		1-10mm <sup>2</sup>	1-10mm <sup>2</sup>	1-25mm <sup>2</sup>
Terminal screw size		M4	M4	M5
Maximum torque		1.2Nm	1.2Nm	2.0Nm
<b>Terminals for operating coils</b>				
Terminal capacity-fine stranded wire		1-2.5mm <sup>2</sup>	1-2.5mm <sup>2</sup>	1-2.5mm <sup>2</sup>
Terminal capacity-solid wire		1-2.5mm <sup>2</sup>	1-2.5mm <sup>2</sup>	1-2.5mm <sup>2</sup>
Terminal screw size		M3	M3	M3
Maximum torque		0.6Nm	0.6Nm	0.6Nm

**Dimensions & Diagrams**

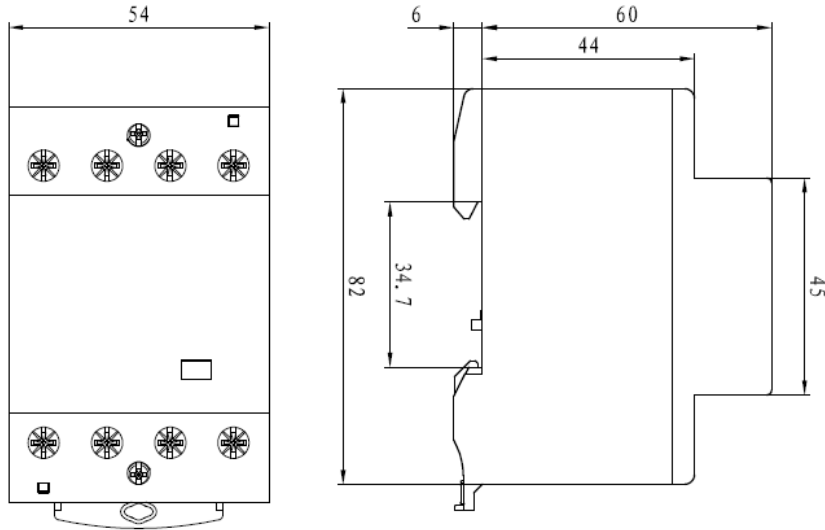
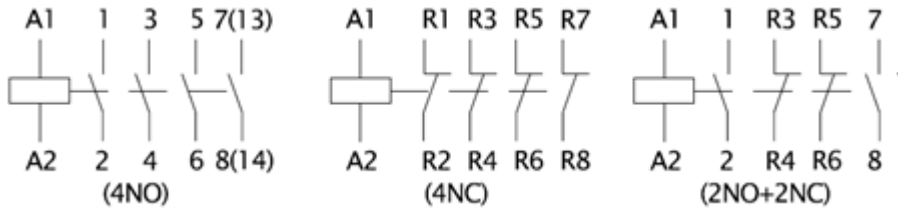
**20A Range**



**25A Range**



### 40A & 63A Range



Subject to change without notice